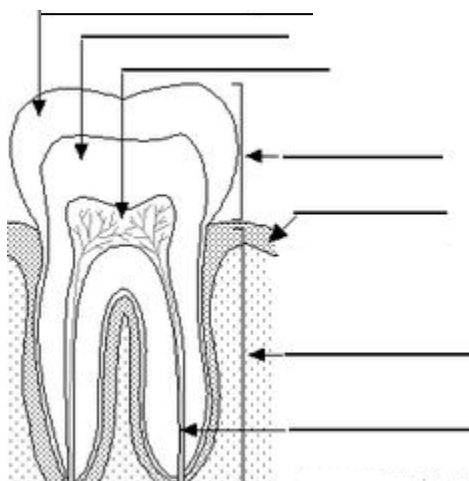


Board – ICSE

Class – 9

Topic – Digestive System

1. Distinguish between the following:
 - a) Milk teeth and Permanent teeth
 - b) Enamel and dentine
 - c) Deciduous and permanent teeth.
 - d) Digestion and assimilation
2. Draw a labelled diagram to show the internal structure of a tooth.



- a) Label all the parts in the diagram.
 - b) Which is the hardest part of tooth.
 - c) Which part of tooth fix the root in position.
3. Which three glands secrets saliva and also explain its various functions?
 4. Why HCl is present in stomach and how the delicate lining of stomach is protected from this acid.
 5. Which digestion will be affected if bile juice is not secreted.
 6. What is function of epiglottis.
 7. What is chyme.
 8. Answer the following questions:
 - a) Which part of small intestine receives bile juice.
 - b) In which part of small intestine maximum absorption takes place and why?
 - c) Which organ stores bile?
 - d) Which is the largest part of large intestine?
 - e) Name the vestigial organ associate with digestive system.

9. What will happen if the acidity of stomach and alkalinity of intestine will disturb.
10. Explain how the substances are absorbed through small intestine.
11. Fill in the blank spaces:

Emulsified fat $\xrightarrow{\hspace{2cm}}$ *Fatty acid + glycerol*

Trypsinogen $\xrightarrow{\text{enterokinase}}$

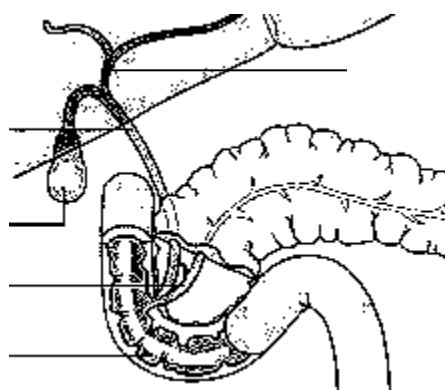
..... $\xrightarrow{\text{Sucrase}}$ *glucose + fructose*

Acidic chyme $\xrightarrow{\hspace{2cm}}$ *alkaline chyme*

..... $\xrightarrow{\text{Rennin}}$ *paracasein*

starch $\xrightarrow{\hspace{2cm}}$ *maltose*

12. Label all the parts of following diagram and give their functions.



13. Name the different kinds of teeth in mammals and state their functions.

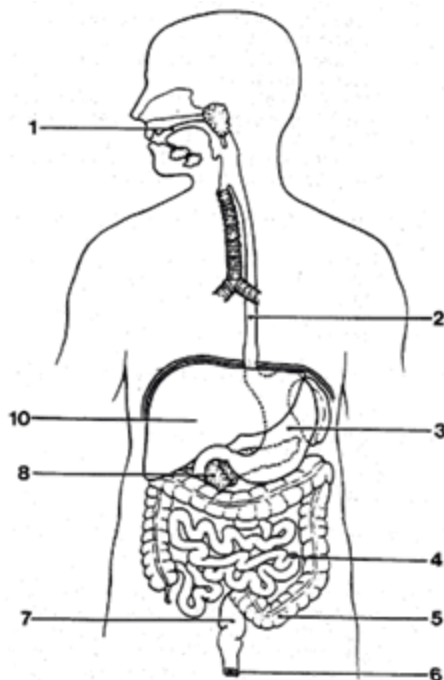
14. Explain the following terms:

- (i) Diastema
- (ii) Dentine
- (iii) Peristalsis
- (iv) Deamination

15. Mention whether the following statements are True (T) or False (F):

- (i) In an adult human, there are 4 molar teeth in each jaw.
- (ii) Cats and dogs are carnivorous animals.
- (iii) Teeth in fish are of one type only (homodont).
- (iv) The last molar tooth is called wisdom tooth.
- (v) The part of the tooth lying above the gum is called the neck.

- (vi) Blood capillaries and nerves are present in the pulp cavity of the teeth.
16. Name the various enzymes secreted in following organs:
- Mouth
 - Esophagus
 - Stomach
 - Small intestine
17. Explain the digestion of all nutrients accomplished by all the enzymes asked in question number 16.
18. Explain the assimilation of food.
19. Give the reason for following questions:
- Pepsin doesn't function in absence of HCl.
 - Enzyme becomes functionless at 20°C.
 - Why food is not digested if the chyme remains in acidic condition.
 - Why starch fails to give test with iodine if saliva is added into it.
20. Following is the diagram of digestive system:



- Label all the parts of diagram.
 - Give the main function of part 3, 4, 6, 8, 10.
21. Which substances provide yellow color to bile.