

Board – ICSE

Class – 9

Topic – THE FLOWER

1. Define the following terms:

a) Placenta:

b) Placentation:

2. What are the essential and non-essential parts of flower, why are they called so?

3. Explain the following terms:

a) Incomplete flower:

b) Staminate flower:

c) Pistillate flower

d) Bisexual Flower:

4. Name the following:

a) A flower which contains both stamens and carpels

b) A unisexual flower which contains only the stamens is called

c) flower which contains all the four floral structures.

d) When perianth is green like the sepals, it is described as

e) Stamens are collectively called as

5. Mention if the following statements are true or false, and rewrite the correct statement.

a) A flower has typically 4 whorls

b) Papaya is a monoecious plant.

c) The number of stamens in different flowers may vary from a few to a large number.

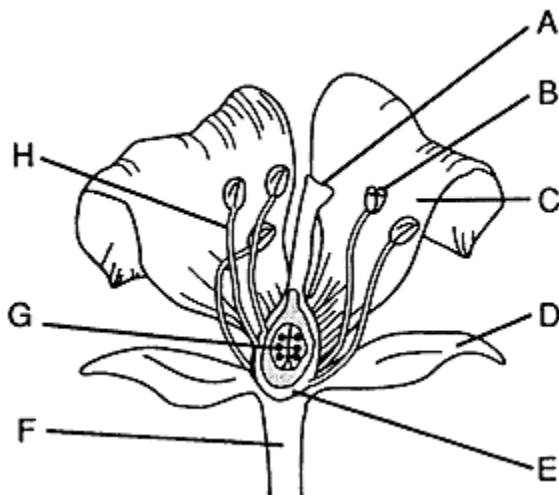
d) If the sepals are free it is called as gamosepalous.

e) Nasturtium has nectaries

6. Differentiate between Monoecious and Dioecious plants?

7. Explain different parts of a Carpel?

8. Label the parts A-H



9. Define the following:

- a) Perfect flower:
- b) Imperfect flower:
- c) Polypetalous:
- d) Gamopetalous:
- e) Neuter flower:

10. Define flower? Name the different whorls of the flower.