

SAMPLE QUESTION PAPER (TERM I) 2021-22

CLASS XII

BIOLOGY

Time: 90 Minutes

General Instructions:

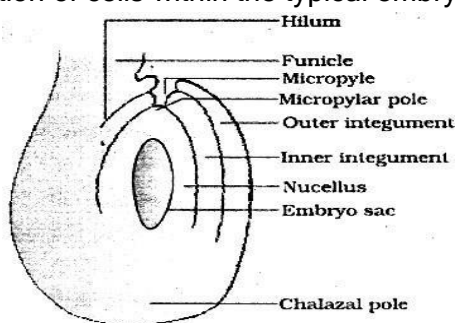
1. The Question Paper contains three sections.
2. Section A has 24 questions. Attempt any 20 questions.
3. Section B has 24 questions. Attempt any 20 questions.
4. Section C has 12 questions. Attempt any 10 questions.
5. All questions carry equal marks.
6. There is no negative marking.

SECTION - A

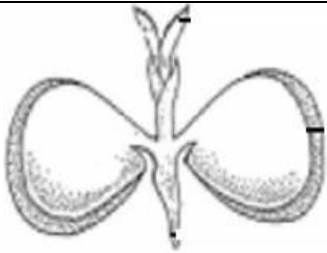
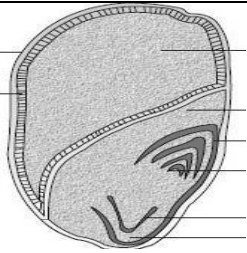
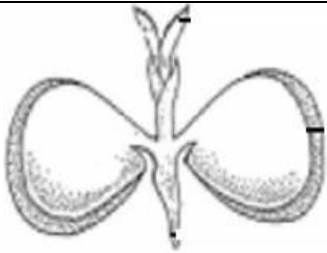
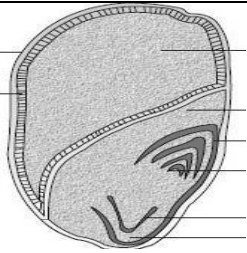
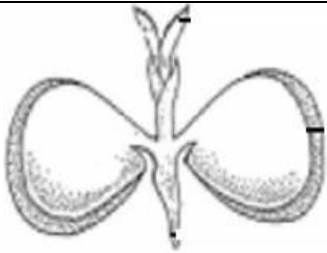
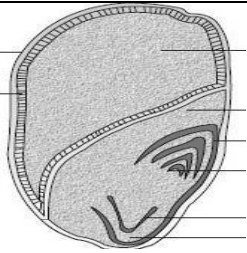
Section - A consists of 24 questions. Attempt any 20 questions from this section. The first attempted 20 questions would be evaluated.

- 1 The structure of bilobed anther consists of
- A. 2 thecae, 2 sporangia
 - B. 4 thecae, 4 sporangia
 - C. 4 thecae, 2 sporangia
 - D. 2 thecae, 4 sporangia

- 2 In the figure of anatropous ovule given below, choose the correct option for the characteristic distribution of cells within the typical embryo sac



	Number of cells at chalazal end	Number of cells at micropylar end	Number of nuclei left in central cell
A	3	2	3
B	3	3	2
C	2	3	3
D	2	2	4

3	<p>The coconut water from tender coconut is</p> <p>A. cellular endosperm. B. free nuclear endosperm. C. both cellular and nuclear endosperm. D. free nuclear embryo.</p>				
4	<p>Pollen grains are well preserved as fossils because of presence of</p> <p>A. sporopollenin B. cellulose C. lignocellulose D. pectocellulose</p>				
5	<p>Which of the following statements are true related to Seed X and Y?</p> <table border="1" data-bbox="380 659 1406 1031"> <tr> <td data-bbox="380 659 912 968">  </td> <td data-bbox="912 659 1406 968">  </td> </tr> <tr> <td data-bbox="380 968 912 1031" style="text-align: center;">SEED X</td> <td data-bbox="912 968 1406 1031" style="text-align: center;">SEED Y</td> </tr> </table> <p>(i) Seed X is dicot and endospermic or albuminous. (ii) Seed X is dicot and non-endospermic or non-albuminous. (iii) Seed Y is monocot and endospermic or albuminous. (iv) Seed Y is monocot and non-endospermic or non-albuminous.</p> <p>Choose the correct option with the respect to the nature of the seed</p> <p>A. (i), (iii) B. (ii), (iii) C. (i), (iv) D. (ii), (iv)</p>			SEED X	SEED Y
					
SEED X	SEED Y				
6	<p>Which of the following statements are correct with respect to hormones secreted by placenta?</p> <p>(i) Placenta secretes relaxin during later stage of pregnancy. (ii) Placenta secretes high amount of FSH during pregnancy. (iii) Placenta secretes relaxin during initial stage of pregnancy. (iv) Placenta secretes hCG and hPL during pregnancy.</p> <p>A. (i) and (iv) B. (i), (ii) and (iv) C. (iii) and (iv) D. (ii), (iii) and (iv)</p>				

7

Figure A shows the front view of the human female reproductive system and Figure B shows the development of a fertilized human egg cell

Figure A

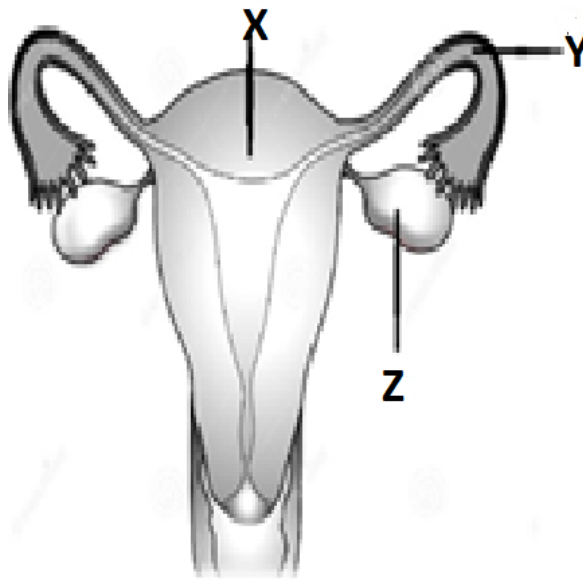
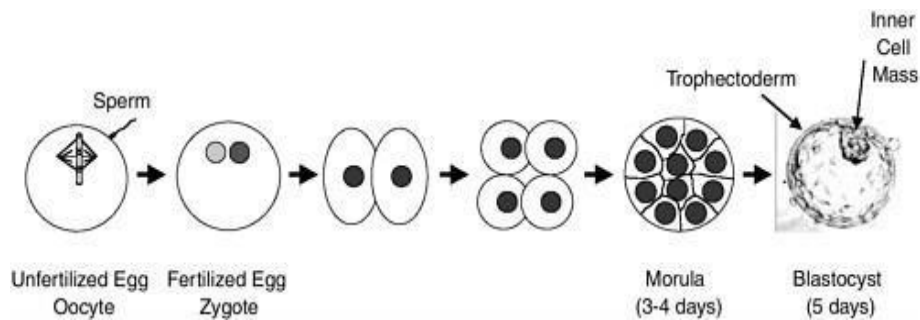


Figure B.



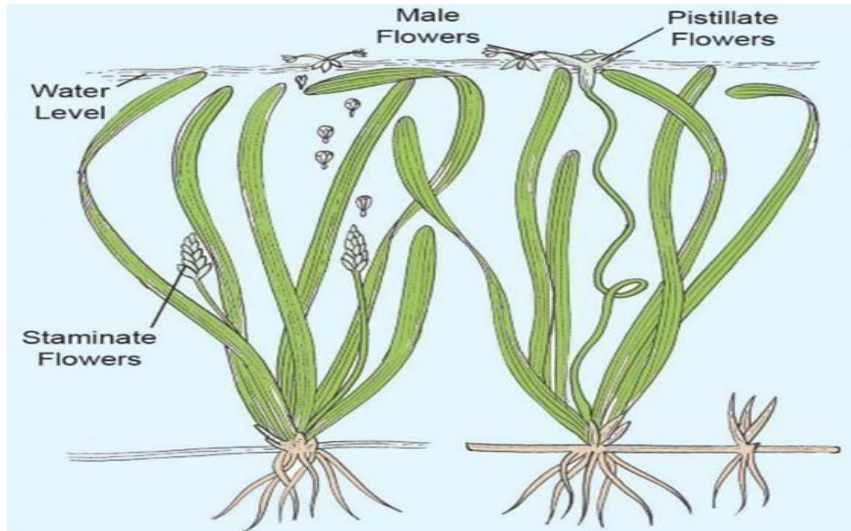
Identify the correct stage of development of human embryo (Figure B) that takes place at the site X, Y and Z respectively in the human female reproductive system (Figure A).

Choose the correct option from the table below:

	X	Y	Z
A	Morula	Fertilized egg	Blastocyst
B	Unfertilized egg	Fertilized egg	Morula
C	Blastocyst	Fertilized egg	Unfertilized egg
D	Fertilized egg	Morula	Blastocyst

- 8 Penetration of the sperm in the ovum is followed by
 A. formation of first polar body.
 B. completion of meiosis II.
 C. first meiosis.
 D. dissolution of zona pellucida.
- 9 The correct sequence of hormone secretion from beginning of menstruation is
 A. FSH, progesterone, estrogen.
 B. estrogen, FSH, progesterone.
 C. FSH, estrogen, progesterone.
 D. estrogen, progesterone, FSH.

10 In the dioecious aquatic plant shown, identify the characteristics of the male flowers that reach the female flowers for pollination:



	Size of the flower	Colour of flower	Characteristic feature of pollengrain
A	small	brightly coloured	Light weight and non-sticky
B	large	colourless	large and sticky
C	small	white	small, covered with mucilage
D	large	colourless	non sticky

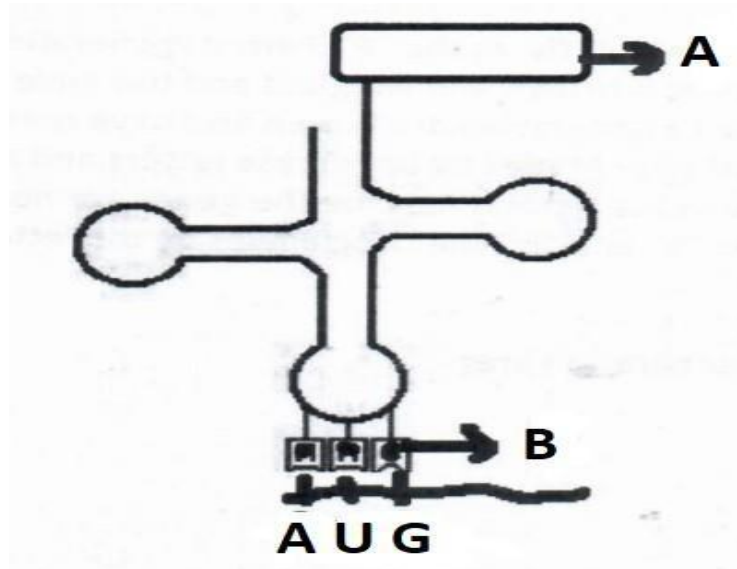
- 11 The thalamus contributes to the fruit formation in
 A. banana.
 B. orange.
 C. strawberry.
 D. guava.

12	<p>How many types of gametes would be produced if the genotype of a parent is AaBB?</p> <p>A. 1 B. 2 C. 3 D. 4</p>
13	<p>Which of the following statements indicates parallelism in genes and chromosomes?</p> <p>(i) They occur in pairs (ii) They segregate during gamete formation (iii) They show linkage (iv) Independent pairs segregate independently</p> <p>A. (i) and (iii) B. (ii) and (iii) C. (i), (ii) and (iii) D. (i), (ii) and (iv)</p>
14	<p>Which of the following amino acid substitution is responsible for causing sickle cell anemia?</p> <p>A. Valine is substituted by Glutamic acid in the α globin chain at the sixth position B. Valine is substituted by Glutamic acid in the β globin chain at seventh position C. Glutamic acid is substituted by Valine in the α globin chain at the sixth position D. Glutamic acid is substituted by Valine in the β globin chain at the sixth position</p>
15	<p>In human beings, where genotype AABBCC represents dark skin colour, aabbcc represents light skin colour and AaBbCc represents intermediate skin colour; the pattern of genetic inheritance can be termed as:</p> <p>A. Pleiotropy and codominance B. Pleiotropy and incomplete dominance C. Polygenic and qualitative inheritance D. Polygenic and quantitative inheritance</p>
16	<p>Which of the following combination of chromosome numbers represents the correct sex determination pattern in honey bees?</p> <p>A. Male 32, Female 16 B. Male 16, Female 32 C. Male 31, Female 32 D. Female 32, Male 31</p>

17	<p>Rajesh and Mahesh have defective haemoglobin due to genetic disorders. Rajesh has too few globin molecules while Mahesh has incorrectly functioning globin molecules. Identify the disorder they are suffering from.</p> <table border="1" data-bbox="493 275 1308 569"> <thead> <tr> <th></th> <th>Rajesh</th> <th>Mahesh</th> </tr> </thead> <tbody> <tr> <td>A.</td> <td>Sickle cell anaemia - an autosome linked recessive trait</td> <td>Thalassemia – an autosome linked dominant trait</td> </tr> <tr> <td>B.</td> <td>Thalassemia – an autosome linked recessive blood disorder</td> <td>Sickle cell anaemia - an autosome linked recessive trait</td> </tr> <tr> <td>C.</td> <td>Sickle cell anaemia - an autosome linked recessive trait</td> <td>Thalassemia – an autosome linked recessive blood disorder</td> </tr> <tr> <td>D.</td> <td>Thalassemia – an autosome linked recessive blood disorder</td> <td>Sickle cell anaemia - an autosome linked dominant trait</td> </tr> </tbody> </table>		Rajesh	Mahesh	A.	Sickle cell anaemia - an autosome linked recessive trait	Thalassemia – an autosome linked dominant trait	B.	Thalassemia – an autosome linked recessive blood disorder	Sickle cell anaemia - an autosome linked recessive trait	C.	Sickle cell anaemia - an autosome linked recessive trait	Thalassemia – an autosome linked recessive blood disorder	D.	Thalassemia – an autosome linked recessive blood disorder	Sickle cell anaemia - an autosome linked dominant trait
	Rajesh	Mahesh														
A.	Sickle cell anaemia - an autosome linked recessive trait	Thalassemia – an autosome linked dominant trait														
B.	Thalassemia – an autosome linked recessive blood disorder	Sickle cell anaemia - an autosome linked recessive trait														
C.	Sickle cell anaemia - an autosome linked recessive trait	Thalassemia – an autosome linked recessive blood disorder														
D.	Thalassemia – an autosome linked recessive blood disorder	Sickle cell anaemia - an autosome linked dominant trait														
18	<p>Which of the following criteria must a molecule fulfil to act as a genetic material?</p> <p>(i) It should not be able to generate its replica (ii) It should chemically and structurally be stable (iii) It should not allow slow mutation (iv) It should be able to express itself in the form of Mendelian Characters</p> <p>A. (i) and (ii) B. (ii) and (iii) C. (iii) and (iv) D. (ii) and (iv)</p>															
19	<p>The promoter site and the terminator site for transcription are located at</p> <p>A. 3' (downstream) end and 5' (upstream) end, respectively of the transcription unit B. 5' (upstream) end and 3' (downstream) end, respectively of the transcription unit C. the 5' (upstream) end of the transcription unit D. the 3' (downstream) end of the transcription unit</p>															
20	<p>Which of the following is correct about mature RNA in eukaryotes?</p> <p>A. Exons and introns do not appear in the mature RNA. B. Exons appear, but introns do not appear in the mature RNA. C. Introns appear, but exons do not appear in the mature RNA. D. Both exons and introns appear in the mature RNA.</p>															
21	<p>In <i>E.coli</i>, the lac operon gets switched on when</p> <p>A. lactose is present and it binds to the repressor. B. repressor binds to operator. C. RNA polymerase binds to the operator. D. lactose is present and it binds to RNA polymerase.</p>															

- 22 Oswald Avery, Colin MacLeod and Maclyn McCarty used enzymes to purify biochemicals such as proteins, DNA and RNA from the heat-killed S cells to see which ones could transform live R cells into S cells in Griffith's experiment. They observed that
- A. Proteases and RNases affected transformation.
 - B. DNase inhibited transformation.
 - C. Proteases and Lipases affected transformation.
 - D. RNases inhibited transformation.

23



AUG on the mRNA will result in the activation of which of the following RNA having correct combination of amino acids:

	Site A	Site B
A.	UAC	Methionine
B.	Methionine	UAC
C.	Methionine	AUG
D.	AUG	Methionine

- 24 Short stretches of DNA used to identify complementary sequence in a sample are called
- A. probes
 - B. markers
 - C. VNTRs
 - D. primers

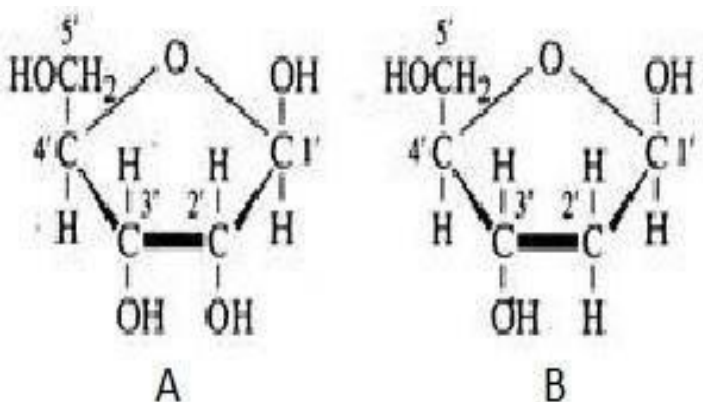
SECTION - B

Section - B consists of 24 questions (Sl. No.25 to 48). Attempt any 20 questions from this section. The first attempted 20 questions would be evaluated.

	<p>Question No. 25 to 28 consist of two statements – Assertion (A) and Reason (R). Answer these questions selecting the appropriate option given below:</p> <p>A. Both A and R are true and R is the correct explanation of A B. Both A and R are true and R is not the correct explanation of A C. A is true but R is false D. A is False but R is true</p>
25	<p>Assertion: Lactational amenorrhea is the natural method of contraception. Reason: It increases the phagocytosis of sperm.</p>
26	<p>Assertion: Saheli, an oral contraceptive for females, contains a steroidal preparation. Reason: It is a "once a week" pill with very few side effects.</p>
27	<p>Assertion: Parturition is induced by a complex neuro endocrine mechanism. Reason: At the end of gestation period, the maternal pituitary releases prolactin which causes uterine contractions.</p>
28	<p>Assertion: When the two genes in a dihybrid cross are situated on the same chromosome, the proportion of parental gene combinations is much higher than non-parental type. Reason: Higher parental gene combinations can be attributed to crossing over between two genes.</p>
	<p>Concentration of which of the following substances will decrease in the maternal blood as it flows from embryo to placenta through the umbilical cord?</p> <div data-bbox="571 1243 1218 1612" data-label="Image"></div>
	<p>i. Oxygen ii. Amino Acids iii. Carbon dioxide iv. Urea</p> <p>A. i and ii B. ii and iv C. iii and iv D. i and iv</p>

30	<p>In a fertilized ovule, n, 2n and 3n conditions occur respectively in</p> <p>A. antipodal, zygote and endosperm B. zygote, nucellus and endosperm C. endosperm, nucellus and zygote. D. antipodals, synergids and integuments</p>
31	<p>A botanist studying <i>Viola</i> (common pansy) noticed that one of the two flower types withered and developed no further due to some unfavorable condition, but the other flower type on the same plant survived and it resulted in an assured seed set. Which of the following will be correct?</p> <p>A. The flower type which survived is Cleistogamous and it always exhibits autogamy B. The flower type which survived is Chasmogamous and it always exhibits geitonogamy. C. The flower type which survived is Cleistogamous and it exhibits both autogamy and geitonogamy. D. The flower type which survived is Chasmogamous and it never exhibits autogamy.</p>
32	<p>During parturition, a pregnant woman is having prolonged labour pains and child birth has to be fastened. It is advisable to administer a hormone that can</p> <p>A. increase the metabolic rate. B. release glucose in the blood. C. stimulate the ovary. D. activate smooth muscles.</p>
33	<p>A female undergoing IVF treatment has blocked fallopian tubes. The technique by which the embryo with more than 8 blastomeres will be transferred into the female for further development is</p> <p>A. ZIFT B. GIFT C. IUT D. AI</p>
34	<p>The mode of action of the copper ions in an IUD is to</p> <p>A. increase the movement of sperms. B. decrease the movement of the sperms. C. make the uterus unsuitable for implantation. D. make the cervix hostile to the sperms.</p>
35	<p>To produce 400 seeds, the number of meiotic divisions required will be</p> <p>A. 400 B. 200 C. 500 D. 800</p>

36	<p>A cross is made between tall pea plants having green pods and dwarf pea plants having yellow pods. In the F₂ generation, out of 80 plants how many are likely to be tallplants?</p> <p>A. 15 B. 20 C. 45 D. 60</p>
37	<p>In <i>Antirrhinum</i>, RR is phenotypically red flowers, rr is white and Rr is pink. Select the correct phenotypic ratio in F₁ generation when a cross is performed between RR X Rr:</p> <p>A. 1 red: 2 Pink: 1 white B. 2 Pink: 1 white C. 2 Red: 2 Pink D. All Pink</p>
38	<p>What would be the genotype of the parents if the offspring have the phenotypes in 1:1 proportion?</p> <p>A. Aa X Aa B. AA X AA C. Aa X AA D. Aa x aa</p>
39	<div style="text-align: center;"> <p>The pedigree chart shows three generations. Generation I: (I-1) unaffected female, (I-2) unaffected male; (I-3) unaffected female, (I-4) affected male. Generation II: (II-1) unaffected female, (II-2) unaffected male, (II-3) affected female, (II-4) affected female, (II-5) affected female, (II-6) unaffected male, (II-7) unaffected female, (II-8) affected male. Generation III: (III-1) affected male, (III-2) unaffected female, (III-3) unaffected female.</p> </div> <p>What is the pattern of inheritance in the above pedigree chart?</p> <p>A. Autosomal dominant B. Autosomal recessive C. Sex -linked dominant D. Sex -linked recessive</p>
40	<p>A couple has two daughters. What is the probability that the third child will also be a female?</p> <p>A. 25% B. 50% C. 75% D. 100%</p>

41	<p>Genotypic ratio of 1:2:1 is obtained in a cross between</p> <p>A. AB X AB B. Ab X Ab C. Ab X ab D. ab X ab</p>
42	<p>Total number of nucleotide sequences of DNA that codes for a hormone is 1530. The proportion of different bases in the sequence is found to be Adenine = 34%, Guanine = 19%, Cytosine = 23%, Thymine = 19%.</p> <p>Applying Chargaff's rule, what conclusion can be drawn?</p> <p>A. It is a double stranded circular DNA. B. It is a single stranded DNA. C. It is a double stranded linear DNA. D. It is a single stranded DNA coiled on Histones.</p>
43	<p>A stretch of an euchromatin has 200 nucleosomes. How many bp will there be in the stretch and what would be the length of the typical euchromatin?</p> <p>A. 20,000 bp and $13,000 \times 10^{-9}$ m B. 10,000 bp and $10,000 \times 10^{-9}$ m C. 40,000 bp and $13,600 \times 10^{-9}$ m D. 40,000 bp and $13,900 \times 10^{-9}$ m</p>
44	<p>Observe structures A and B given below. Which of the following statements are correct?</p> <div style="text-align: center;">  </div> <p>A. A is having 2'-OH group which makes it less reactive and structurally stable, whereas B is having 2'-H group which makes it more reactive and unstable.</p> <p>B. A is having 2'-OH group which makes it more reactive and structurally unstable, whereas B is having 2'-H group which makes it less reactive and structurally stable.</p> <p>C. A and B both have -OH groups which make it more reactive and structurally stable.</p> <p>D. A and B both are having -OH groups which make it less reactive and structurally stable</p>

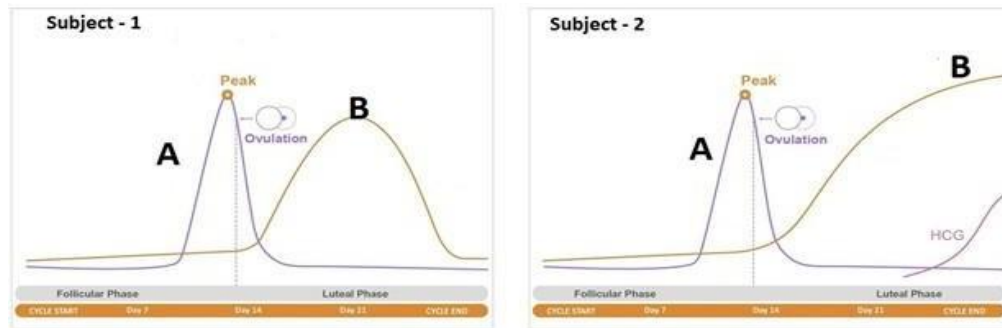
45	<p>If Meselson and Stahl's experiment is continued for sixth generations in bacteria, the ratio of Heavy strands $^{15}\text{N}/^{15}\text{N}$:Hybrid $^{15}\text{N}/^{14}\text{N}$: light $^{14}\text{N}/^{14}\text{N}$ containing DNA in the sixth generation would be</p> <p>A. 1:1:1 B. 0:1:7 C. 0:1:15 D. 0:1:31</p>
46	<p>Two important RNA processing events lead to specialized end sequences in most human mRNAs: ____ (i) ____ at the 5' end, and ____ (ii) ____ at the 3' end. At the 5' end the most distinctive specialized end nucleotide, (iii) is added and a sequence of about 200 (iv) is added to the 3' end.</p> <p>A. (i) Initiator codon (ii) Promotor (iii) Terminator codon (iv) Release factors B. (i). Promotor (ii) Elongation (iii) Regulation (iv) Termination. C. (i) Capping (ii) Polyadenylation (iii) $^m\text{G}_{\text{ppp}}$ (iv) Poly(A). D. (i) Repressor (ii) Co repressor (iii) Operon (iv) sRelease factors</p>
47	<p>What are minisatellites?</p> <p>A. 10-40 bp sized small sequences within the genes B. Short coding repetitive region on the eukaryotic genome C. Short non-coding repetitive sequence forming large portion of eukaryotic genome D. Regions of coding strands of the DNA</p>
48	<p>There was a mix-up at the hospital after a fire accident in the nursery division. Which of these children belong to the parents?</p> <div style="text-align: center;"> <p>FATHER MOTHER CHILD 1 CHILD 2 CHILD 3 CHILD 4 CHILD 5 CHILD 6</p> <p>LANE 1 LANE 2 LANE 3 LANE 4 LANE 5 LANE 6 LANE 7 LANE 8</p> </div> <p>A. All of the children B. Children 2, 3 & 6 C. Children 1 & 3 D. Children 2 & 4</p>

SECTION - C

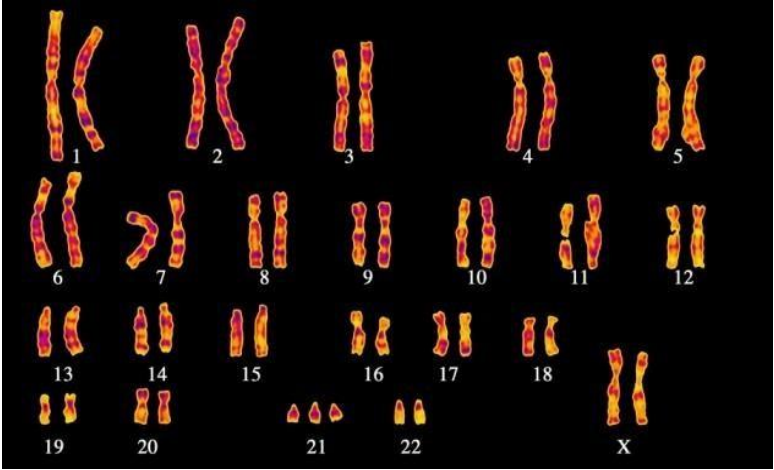
Section-C consists of **one case** followed by 6 questions linked to this case (Q.No.49 to 54). Besides this, 6 more questions are given. Attempt any 10 questions in this section.

The first attempted 10 questions would be evaluated.

Case To answer the questions, study the graphs below for Subject 1 and 2 showing different levels of certain hormones.

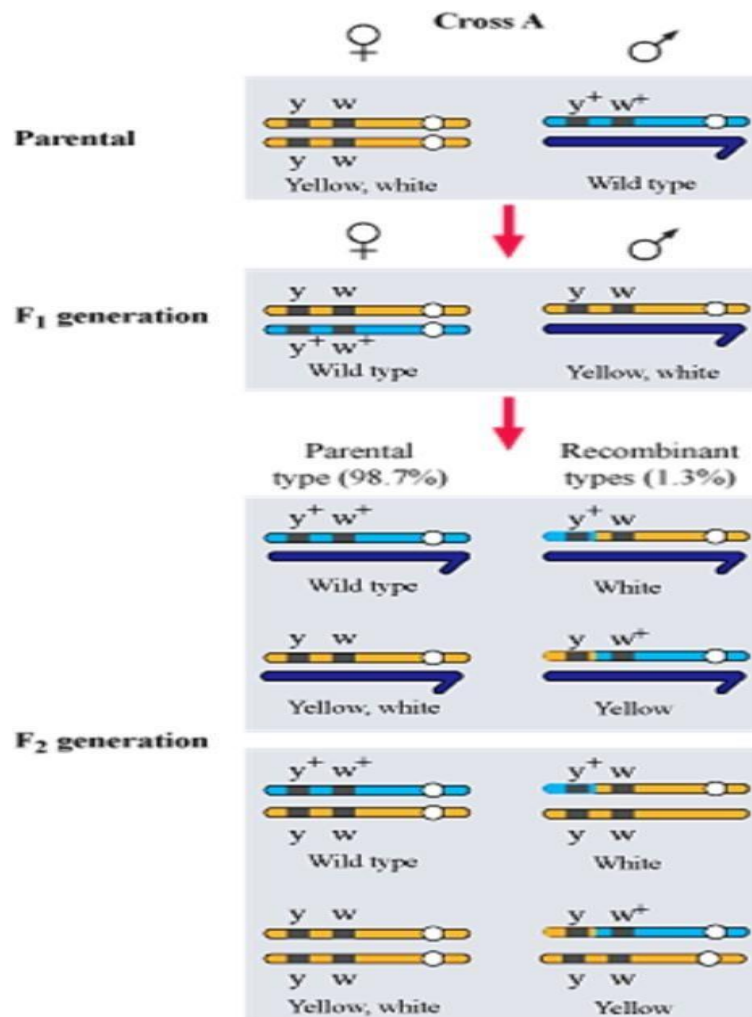


49	The peak observed in Subject 1 and 2 is due to A. estrogen B. progesterone C. luteinizing hormone D. follicle stimulating hormone
50	Subject 2 has higher level of hormone B, which is A. estrogen B. progesterone C. luteinizing hormone D. follicle stimulating hormone
51	If the peak of Hormone A does not appear in the study for Subject 1, which of the following statement is true? A. Peak of Hormone B will be observed at a higher point in the graph B. Peak of Hormone B will be observed at a point lower than what is given in the graph C. There will be no observed data for Hormone B D. The graph for Hormone B will be a sharp rise followed by a plateau
52	Which structure in the ovary will remain functional in subject 2? A. Corpus Luteum B. Tertiary follicle C. Graafian follicle D. Primary follicle

53	<p>For subject 2 it is observed that the peak for hormone B has reached the plateau stage. After approximately how much time will the curve for hormone B descend?</p> <p>A. 28 days B. 42 days C. 180 days D. 280 days</p>
54	<p>Which of the following statements is true about the subjects?</p> <p>A. Subject 1 is pregnant B. Subject 2 is pregnant C. Both subject 1 and 2 are pregnant D. Both subject 1 and 2 are not pregnant</p>
55	<p>The gene that controls the ABO blood group system in human beings has three alleles -I^A, I^B and i. A child has blood group O. His father has blood group A and mother has blood group B. Genotypes of other off springs can be:</p> <p>i. $I^B I^B$ ii. $I^A i$ iii. $I^B i$ iv. $I^A I^B$ v. $i i$</p> <p>A. i, ii, iii, v B. ii, iii, iv, v C. iii, iv, v D. iv, iii, i</p>
56	<p>Placed below is a karyotype of a human being..</p>  <p>On the basis of this karyotype, which of the following conclusions can be drawn:</p> <p>A. Normal human female B. Person is suffering from Colour Blindness C. Affected individual is a female with Down's syndrome D. Affected individual is a female with Turner's syndrome</p>

57

Given below is a dihybrid cross performed on *Drosophila*.

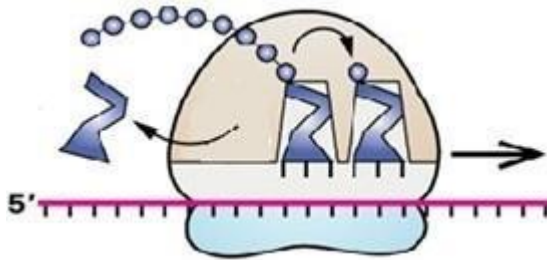


Which of the following conclusions can be drawn on the basis of this cross?

When yellow bodied (y), white eyed (w) *Drosophila* females were hybridized with brown bodied (y^+), red eyed males (w^+) and F₁ progenies were intercrossed, F₂ generation would have shown the following ratio:

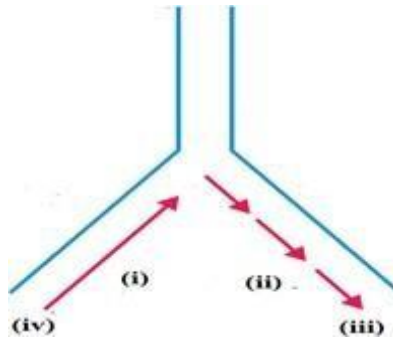
- 1:2:1 because of linkage of genes
- 9:3:3:1 because of recombination of genes
- Deviation from 9:3:3:1 ratio because of segregation of genes
- Deviation from 9:3:3:1 ratio because of linkage of genes

58 Which cellular process is shown below?



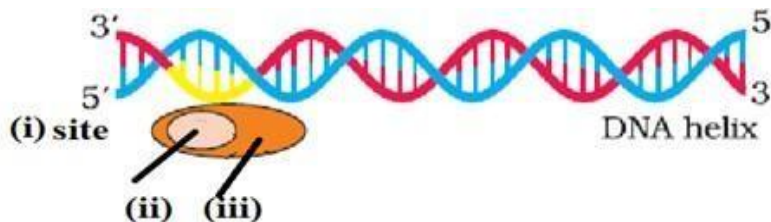
- A. DNA Replication
- B. Translation - Initiation
- C. Translation - Elongation
- D. Translation - Termination

59 Origin of replication of DNA in *E. coli* is shown below, Identify the labelled parts (i),(ii), (iii) and (iv)



- A. (i)- discontinuous synthesis , (ii)- continuous synthesis (iii) 3' end (iv) 5'end
- B. (i)- continuous synthesis , (ii)- discontinuous synthesis (iii) 5' end (iv) 3'end
- C. (i)- discontinuous synthesis, (ii)- continuous synthesis (iii) 5' end (iv) 3'end
- D. (i)- continuous synthesis , (ii)- discontinuous synthesis (iii) 3' end (iv) 5'end

60 Transcription unit is represented in the diagram given below.



Identify site (i), factor (ii) and Enzyme (iii) responsible for carrying out the process.

- A. (i) Promoter Site, (ii) Rho factor (iii) RNA polymerase
- B. (i) Terminator Site, (ii) Sigma factor (iii) RNA polymerase
- C. (i) Promoter Site, (ii) Sigma factor (iii) RNA polymerase
- D. (i) Promoter Site, (ii) Sigma factor (iii) DNA polymerase

* * *

Questions in lieu of diagram based questions for VI candidates

Total Alternative Questions - 20

Section - A

2. During megasporogenesis, potential megaspore mother cell undergoes following cell divisions to form gametophyte female

- two meiotic divisions and three mitotic division
- one meiotic and one mitotic divisions
- one meiotic and three mitotic divisions
- one meiotic and two mitotic divisions

5. Apomictic embryos in Citrus arise from:

- diploid Egg
- synergids
- nucellus
- antipodal cells

7. Choose the correct option wherein, the correct stages of the development of human embryo takes place.

	Ovary	Fallopian Tube	Uterus
A	Morula	Fertilized egg	Blastocyst
B	Unfertilized egg	Fertilized egg	Morula
C	Unfertilized egg	Fertilized egg	Blastocyst
D	Fertilized egg	Morula	Blastocyst

10. On observing the pollen grain under the microscope, it was found to be long and ribbon shaped. The flower bearing these pollen grain will be pollinated by:

- Insects
- Water
- Air
- Birds

23. Which of the following are correct statements for a tRNA molecule?"

- It is an adapter molecule
- Previously called as sRNA (soluble RNA)
- tRNA has a codon loop that has bases complementary to the code,
- it also has an amino acid acceptor end to which it binds to amino acids.
- It is non-specific for each amino acid.

- i , ii and iii
- ii, iii and iv
- i, ii, and iv
- i, iv and v

Section - B

29. Which of the following is not a function of placenta?
 A. secretes relaxin
 B. facilitates removed of CO_2 and waste products
 C. secretes oxytocin
 D. supplies oxygen and nutrients
39. Which one of the following is an incorrect statement with regard to pedigree analysis?
 A. It verifies that DNA is the carrier of genetic information.
 B. It helps to understand whether the trait depicted in the chart is dominant or recessive.
 C. It confirms that the trait is linked to one of the autosome.
 D. It helps to trace the inheritance of a specific trait.
44. In order to form a dinucleotide during DNA synthesis which functional group at 3' must be free?
 A. Methyl group
 B. Phosphate group
 C. Carboxylic acid
 D. Hydroxyl
- 48.. The DNA fingerprinting pattern of child is
 A. Exactly similar to that of both the parents
 B. 100% similar to the father's DNA print
 C. 100% similar to the mother's DNA print
 D. 50% bands similar to father and rest similar to mother

Section - C

Case A biology student after studying about the different levels of hormones during the menstrual cycle was comparing 2 subjects (Patients). A table was created after looking at the levels of hormones A and B for Subject 1 and 2. Read the information in the table and answer the questions that follow (Q49 to 54):

	HORMONE A	HORMONE B
Subject 1	Shows a peak on the 14th Day of the menstrual cycle	Falls down during the luteal phase
Subject 2	Shows a peak on the 14th Day of the menstrual cycle	Level is maintained high in the luteal phase

49. The peak observed in Subject 1 and 2 is due to
 A. Estrogen
 B. Progesterone
 C. Luteinizing Hormone
 D. Follicle Stimulating Hormone

50.	<p>The Subject 2 has higher level of hormone B, which is</p> <ul style="list-style-type: none"> A. Estrogen B. Progesterone C. Luteinizing Hormone D. Follicle Stimulating Hormone
51.	<p>If the peak of Hormone A does not appear in the study for Subject 1, which of the following statement is true</p> <ul style="list-style-type: none"> A. Peak of Hormone B will be observed at a higher point in the graph B. Peak of Hormone B will be observed at a point lower than what is given in the graph C. There will be no observed data for Hormone B D. The Hormone B will show a sharp rise followed by a plateau
52.	<p>Which structure in the ovary will remain functional in subject 2?</p> <ul style="list-style-type: none"> A. Corpus Luteum B. Tertiary follicle C. Graafian follicle D. Primary follicle
53.	<p>For subject 2 it is observed that the peak for hormone B has reached the plateau stage. After approximately how much time will the curve for hormone B descend?</p> <ul style="list-style-type: none"> A. 28 days B. 42 days C. 180 days D. 280 days
54.	<p>Which of the following statements is true about the subjects?</p> <ul style="list-style-type: none"> A. Subject 1 is pregnant B. Subject 2 is pregnant C. Subject 1 and 2 both are pregnant D. Subject 1 and 2 both are not pregnant
56.	<p>Domestic wheat, which has 42 chromosomes, is probably hexaploid (6n), whereas the haploid number in the ancestral ones was 7. Find out the right reason as to how are such plants produced?</p> <ul style="list-style-type: none"> A. Due to failure of segregation of chromatids during cell division cycle B. Due to the gain of extra copy of chromosome C. Due to failure of cytokinesis after telophase stage of cell division D. Due to the loss of extra copy of chromosome

57.	<p>The following are results of crossing a female fly (AaBb) with a male fly (aabb).</p> <p>AaBb 1005 aabb 1000 Aabb 200 aaBb 210</p> <p>Which two genotypes are the recombinant offspring?</p> <p>A. AaBb & Aabb B. AaBb & aaBb C. Aabb & aaBb D. AaBb & aabb</p>
58.	<p>On the ribosome, mRNA binds _____ and two sites in the _____ for subsequent amino acids to bind to be close enough to each other for the formation of a peptide bond.</p> <p>A. between the subunits; on the large subunit. B. to the large subunit; on the small subunit. C. to the small subunit; on the large subunit. D. to the small subunit; between the subunits.</p>
59.	<p>The main reason for the presence of both a leading and a lagging strand during DNA replication is,</p> <p>A. DNA polymerase can read only in the direction of 3' to 5' B. DNA polymerase can only synthesize one strand at a time C. Only one strand is available to be read at any given time D. There are not enough RNA primers to have both strands be synthesized simultaneously</p>
60.	<p>In a cell, DNA transcription is halted when</p> <p>A. RNA polymerase falls off of the DNA. B. The end of the DNA is reached. C. When a rho site is reached. D. When a stop codon is reached.</p>

* * *