

Board – CBSE

Class – 10th

Topic – Heredity and Evolution

1. A Mendelian experiment consisted of breeding tall pea plants bearing violet flowers with short pea plants bearing white flowers. The progeny all bore violet flowers, but almost half of them were short. This suggests that the genetic make-up of the tall parent can be depicted as

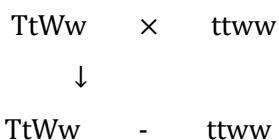
- (a) TTWW (b) TTww
(c) TtWW (d) TtWw

Ans. (c) The genetic make-up of the tall parent can be depicted as TtWW

Since all the progeny bore violet flowers, it means that the tall plant having violet flowers has WW genotype for violet flower colour.

Since the progeny is both tall and short, the parent plant was not a pure tall plant. Its genotype must be Tt.

Therefore, the cross involved in the given is



Therefore, half the progeny is tall, but all of them have violet flowers.

2. An example of homologous organs is

- (a) Our arm and a dog's foreleg.
(b) Our teeth and an elephant's tusks.
(c) Potato and runners of grass.
(d) All of the above

Ans. (b) An example of homologous organs is all of the above.

Homologous organs are organs which are similar in structure and origin but have different functions in different organisms. Our arms and a dog's forelegs have the same structure but perform different functions. Similarly, our teeth and the tusks of elephants are similar in origin but perform different functions. Also, potatoes and runners of grass are stem modifications. Hence, all the options are examples of homologous organs.

3. In evolutionary terms, we have more in common with

- (a) A Chinese schoolboy. (b) A chimpanzee.
(c) A spider. (d) A bacterium.

Ans. (a) In evolutionary terms, we have more in common with a Chinese schoolboy.

4. A study found that children with light-coloured eyes are likely to have parents with light-coloured eyes. On this basis, can we say anything about whether the light eye colour trait is dominant or recessive? Why or why not?

Ans. Let us assume that children with light-coloured eyes can either have LL or Ll or ll genotype. If the children have an LL genotype, then their parents will also be of an LL genotype.

$$\begin{array}{ccc} LL & \times & LL \\ \downarrow & & \\ LL & & \end{array}$$

If the children with light-coloured eyes have ll genotype, then their parents will also have ll genotype.

$$\begin{array}{ccc} ll & \times & ll \\ \downarrow & & \\ ll & & \end{array}$$

Therefore, it cannot be concluded whether light eye colour is dominant or recessive.

5. How are the areas of study – evolution and classification – interlinked?

Ans. Classification involves the grouping of organisms into a formal system based on similarities in internal and external structure or evolutionary history.

Two species are more closely related if they have more characteristics in common. And if two species are more closely related, then it means they have a more recent ancestor.

For example, in a family, a brother and sister are closely related and they have a recent common ancestor i.e., their parents. A brother and his cousin are also related but less than the sister and her brother. This is because the brother and his cousin have a common ancestor i.e., their grandparents in the second generation whereas the parents were from the first generation.

With subsequent generations, the variations make organisms more different than their ancestors.

This discussion proves that we classify organisms according to their resemblance which is similar to creating an evolutionary tree.

6. Explain the terms analogous and homologous organs with examples.

Ans. Homologous organs are similar in origin (or are embryologically similar) but perform different functions. For example, the forelimbs of humans and the wings of birds look different externally but their skeletal structure is similar. It means that their origin is similar (as wings in birds are modifications of the forearm) but functions are different - the wings help in flight whereas the human forearm helps in various activities.



Analogous organs, on the other hand, have different origins but perform similar functions. For example, the wings of a bird and a bat are similar in function but this similarity does not mean that these animals are more closely related. If we carefully look at these structures, then we will find that the wings of a bat are just the folds of skin that are stretched between its fingers whereas the wings of birds are present all along the arm. Therefore, these organs are analogous organs.

7. Outline a project which aims to find the dominant coat colour in dogs.

Ans. Dogs have a variety of genes that govern coat colour. There are at least eleven identified gene series (A, B, C, D, E, F, G, M, P, S, T) that influence coat colour in dogs.

A dog inherits one gene from each of its parents. The dominant gene gets expressed in the phenotype. For example, in the B series, a dog can be genetically black or brown.

Let us assume that one parent is homozygous black (BB), while the other parent is homozygous brown (bb)

	BB		
bb	B	B	
	b	Bb	Bb
	b	Bb	Bb

In this case, all the offspring will be heterozygous (Bb).

Since black (B) is dominant, all the offspring will be black. However, they will have both B and b alleles.

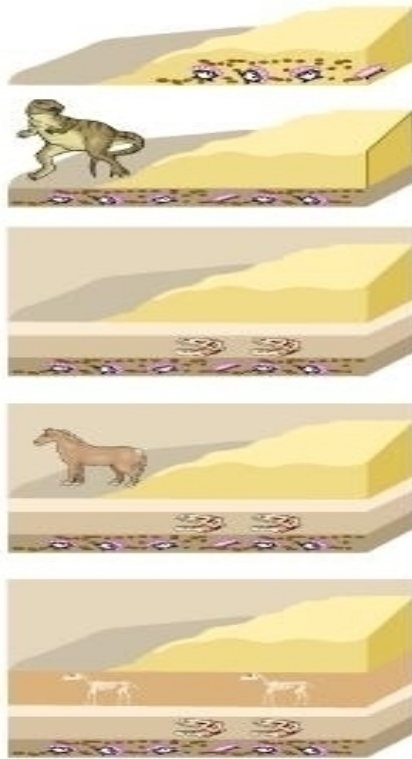
If such heterozygous pups are crossed, they will produce 25% homozygous black (BB), 50% heterozygous black (Bb), and 25% homozygous brown (bb) offspring.

	B	b
B	BB	Bb
b	Bb	bb

8. Explain the importance of fossils in deciding evolutionary relationships.

Ans. Fossils are the remains of the organism that once existed on earth. They represent the ancestors of the plants and animals that are alive today. They provide evidence of evolution by revealing the characteristics of the past organisms and the changes that have occurred in these organisms to give rise to the present organisms. Let us explain the importance of fossils in deciding evolutionary history with the help of the following example.

- Around 100 million years ago, some invertebrates died and were buried in the soil in that area. More sediment accumulated on top of it turning it into sedimentary rock.
- At the same place, millions of years later, some dinosaurs died and their bodies were buried on top of the sedimentary rock. The mud containing dinosaurs also turned into a rock.
- Then, millions of years later, some horse-like creatures died in that area and got fossilized in rocks above the dinosaur fossils.
- Sometime later, due to soil erosion or floods in that area, the rocks containing horse-like fossils are exposed.
- If that area is excavated deeper, then the dinosaur and invertebrate's fossils can also be found. Thus, by digging that area, scientists can easily predict that horse-like animals evolved later than the dinosaurs and the invertebrates.
- Thus, the above example suggests that the fossils found closer to the surface of the earth are more recent than the fossils present in deeper layers.



Layers of fossils

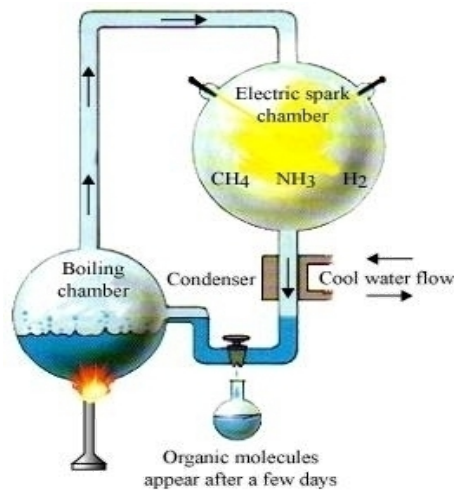
9. What evidence do we have for the origin of life from inanimate matter?

Ans. A British scientist, J.B.S. Haldane suggested that life originated from simple inorganic molecules. He believed that when the earth was formed, it was a hot gaseous mass containing elements such as nitrogen, oxygen, carbon, hydrogen, etc. These elements combined to form molecules like water (H₂O), carbon dioxide (CO₂), methane (CH₄), ammonia (NH₃), etc.

After the formation of water, slowly the earth's surface cooled and the inorganic molecules interacted with one another in water to form simple organic molecules such as sugars, fatty acids, amino acids, etc. The energy for these reactions was provided by solar radiations, lightning, volcanic eruptions, etc.

This was proved by the experiment of Stanley L. Miller and Harold C. Urey in 1953.

They took a mixture of water (H₂O), methane (CH₄), ammonia (NH₃), and hydrogen gas (H₂) in a chamber, and sparks were passed through this mixture using two electrodes. After one week, 15% of the carbon from methane was converted into amino acids, sugars, etc. These organic molecules are polymerized and assembled to form protein molecules that gave rise to life on earth.



10. Explain how sexual reproduction gives rise to more viable variations than asexual reproduction. How does this affect the evolution of those organisms that reproduce sexually?

Ans. In sexual reproduction, two individuals having different variations combine their DNA to give rise to a new individual. Therefore, sexual reproduction allows more variations, whereas, in asexual reproduction, chance variations can only occur when the copying of DNA is not accurate.

Additionally, asexual reproduction allows very less variations because if there are more variations, then the resultant DNA will not be able to survive inside the inherited cellular apparatus.

However, in sexual reproduction, more variations are allowed and the resultant DNA is also able to survive, thus making the variations viable.

Variation and Evolution. Variants help the species to survive in all the conditions. Environmental conditions such as heat, light, pests, and food availability can change suddenly in only one place. At that time, only those variants resistant to these conditions would be able to survive. This will slowly lead to the evolution of a better-adapted species. Thus, variation helps in the evolution of sexually reproducing organisms.

11. How is the equal genetic contribution of male and female parents ensured in the progeny?

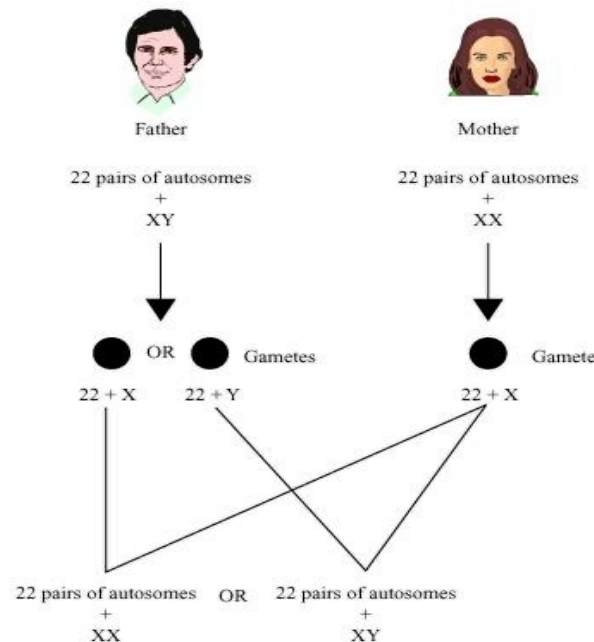
Ans. In human beings, every somatic cell of the body contains 23 pairs of chromosomes. Out of these 23 pairs, the first 22 pairs are known as autosomes and the remaining one pair is known as sex chromosomes represented as X and Y.

Females have two X chromosomes and males have one X and one Y chromosome.

The gamete receives half of the chromosomes. Therefore, the male gametes have 22 autosomes and either X or Y chromosomes.

The female gamete, on the other hand, has 22 autosomes and an X chromosome.

During reproduction, the male and female gametes fuse and thus the progeny receives 22 autosomes and one X or Y chromosome from the male parent and 22 autosomes and one X chromosome from the female parent.



12. Only variations that confer an advantage to an individual organism will survive in a population. Do you agree with this statement? Why or why not?

Ans. In species, variations that offer survival advantages are naturally selected. Individuals adjust to their environments with the help of these selected variations and consequently, these variations are passed on to their progeny. The evolution of organisms occurs as a result of this natural selection.

However, there can be some other variations, which do not offer any survival advantage and arise only accidentally. Such variations in small populations can change the frequency of some genes even if they are not important for survival.

This accidental change in the frequency of genes in small populations is referred to as genetic drift.

Thus, genetic drift provides diversity (variations) without any survival advantage.

